

New

Advanced NDT Method Using Electro-Magnetic Field Imaging (EMFI)

ECHO-3D

Exclusive Canadian
Channel Partner



ECHO-3D is an Electro-Magnetic Field (EMF) based technology that uses Electro-Magnetic Field Imaging (EMFI) to display surface breaking defects in a three dimensional image.

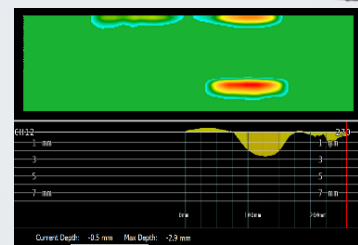
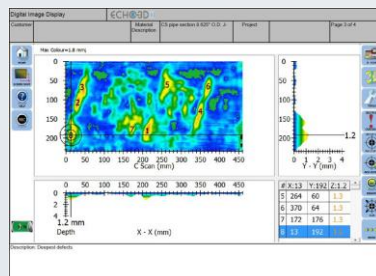


IDEAL FOR DETECTION, MAPPING, MEASUREMENT

FEATURES	BENEFITS
Requires Little or No Surface Clean-up	Start Your Inspections Faster
Inspects Through Paint, Dirt and Non-Conductive Coatings	Reduce Preparation Costs
Does Not Require Contact with the Surface	Leaves No Residue to Clean Up Does Not Require Couplant
Used with Manual or Automated Scanners	Get Accurate Defect locations
Detect and Measure Through >6mm Coatings	Use as a Pre-screening Tool
Inspects Ferrous and Non-Ferrous Materials	Carbon Steel, 300 Series Stainless Steel, Nickel Alloys, Superalloys and Aluminum
Easy to Learn Icon Based Software	Reduce Training Time and Costs Increase Your Field Billable Hours
One Click PDF Report Writer	Reduced Time to Create Reports

Includes:

- Tough Pelican® Cases
- GEN II ECHO-3D Sensor with Encoder Wheel & USB Cable
- Check Plate
- DELL™ Ruggedized Touchscreen Tablet Complete with ECHO-3D Software
- Accessory Kit Includes Pipe Shoes



Non-Destructive Testing (NDT) Products Limited

www.ndtproducts.ca

Head Office/ON & Eastern Canada Sales

113-115 Cushman Road, Suites 22-23, St. Catharines, ON L2M 6S9

T: 905-934-5195 | F: 905-934-2665 | E: sales@ndtproducts.ca

Western Canada Sales

6137 80th Street NW, Edmonton, AB, CA T6E 2W8

T: 587-463-0135 | F: 587-463-0284 | E: sales@ndtproducts.ca



Electro-Magnetic Field Imaging (EMFI)

Exclusive Canadian Channel Partner



SPECIFICATIONS

Overall Dimensions (W x H x D)	65 mm x 85 mm x 80 mm (2.6 in x 3.4 in x 3.2 in)
Weight	306 g [11 oz] sensor only 343 g [12 oz] with removable odometer
Power Requirements	USB 2.0, 260 mW
Power Supply	From tablet
USB Connector	Quick disconnect, 5-pin
Encoder Connector	Quick disconnect, 6-pin
Encoder Support	Supports one X-axis and one Y-axis
Operating Temperature	-10°C to 40°C [14°F to 104°F]
Storage Temperature	-20°C to 60°C [-4°F to 140°F]

OPERATING

Detection Area	>30 mm [1.18 in] diameter
Frequency Range	600 Hz to 8 kHz
Frequencies	Multiple (sequential to a maximum of 3)
Sample Rate	500 samples/second at 1 mm [0.040"] spacing
Lift-off Range	See POD chart below*, based on 95% POD
Crack Detection	Surface breaking Up to 15 mm [0.59"] lift-off (see chart below)
Crack Depth	0 to 4.0 mm ±0.2 mm or 10% [0.16" ±0.01"], whichever is greater 4.1 mm to 5.5 mm ±0.5 mm or 10%, [0.16" to 0.22" ±0.02"] Cracks 19 mm or longer
Encoder	Detachable on X-axis
Operating Humidity	0% to 95%, noncondensing
Water Resistance	Splash proof
Sensor Diagnostics	Continuous
Calibration	Auto calibration
Lift-off	Manual, geometry dependent

*PROBABILITY OF DETECTION (Coating Thickness)

Defect Depth (mm)	0.5	1.0	1.5	2.0	2.5	3.0	4.0	5.0
2	✓	✓	✓	✓	✓	✓	✓	✓
5	x	✓	✓	✓	✓	✓	✓	✓
10	x	x	✓	✓	✓	✓	✓	✓
15	x	x	x	x	x	x	✓	✓

Non-Destructive Testing (NDT) Products Limited

www.ndtproducts.ca

Head Office/ON & Eastern Canada Sales

113-115 Cushman Road, Suites 22-23, St. Catharines, ON L2M 6S9

T: 905-934-5195 | F: 905-934-2665 | E: sales@ndtproducts.ca

Western Canada Sales

6137 80th Street NW, Edmonton, AB, CA T6E 2W8

T: 587-463-0135 | F: 587-463-0284 | E: sales@ndtproducts.ca